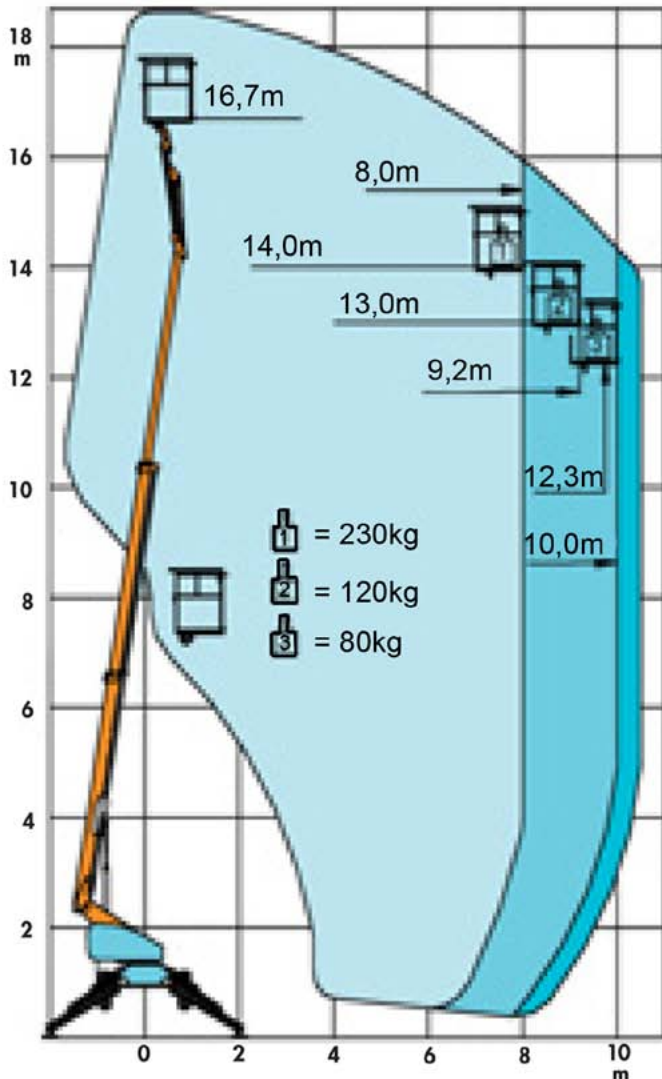


# KESLA XS190

Nostokorkeus 17m

## Tekniset Tiedot



### HEIGHT

Working Height  
Platform Height

18,7 m  
16,7 m

### DIMENSIONS

Length  
Width  
Height  
Weight

6,3 m  
2,1 m  
2,3 m  
3700 kg

Basket Dimensions  
Wheel Base  
Support Width

0,85 m x 1,78 m  
2,3 m  
4,05x4,65 m

### WORK SPECIFICATIONS

Boom type  
Boom Construction  
Lifting Capacity  
Max. Outreach

Telescopic with Flyjib  
High Strength Steel  
230 kg/2 persons  
12,3 m/80 kg  
8,0 m/230 kg

Basket Rotate  
Turning Radius  
Boom Rotation  
Ground Clearance  
Gradeability  
Manual levelling

90°  
3,0 m inside, 5,0 m outside  
360° Unlimited  
0,47 m  
19°/35%

OPERATING SPEED  
2 Speed Selector

Max. 3,6km/h

### POWER TRAIN & CAPACITIES

4 WD  
2 WS  
4 WS & Crab Steer  
Tyre Size

10/75-15,3 Rough Pattern  
350/50-16 Street Pattern

Oscillating Front Axle  
Hydraulic Platform Rotation  
24 V Operating Voltage

Engine

Kubota 1105, 3 cylinder Diesel  
Water Cooled, Low Noise Level

Fuel Capacity  
Brakes

65 l  
4 Hydraulic Discs, Spring Applied

Control System

Full Hydraulic